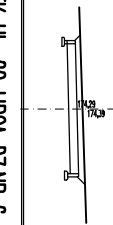
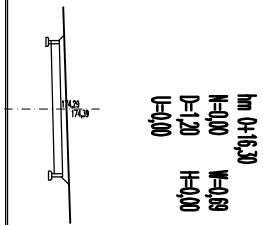
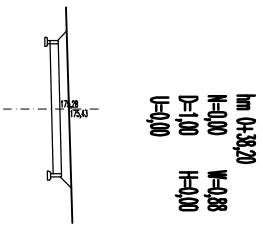
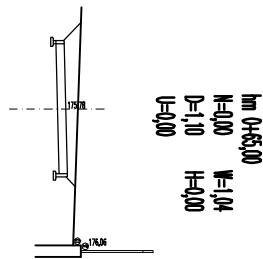
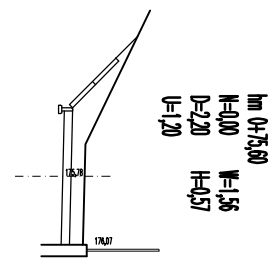
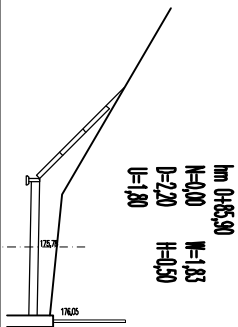
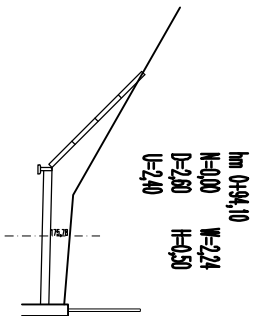
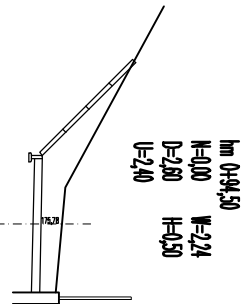
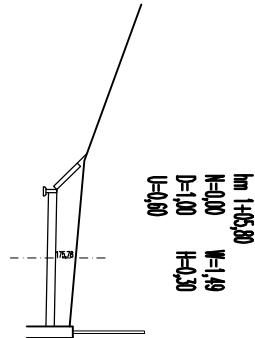
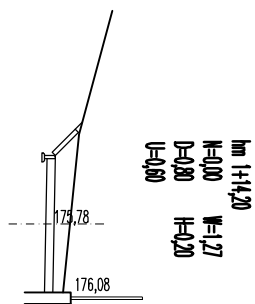
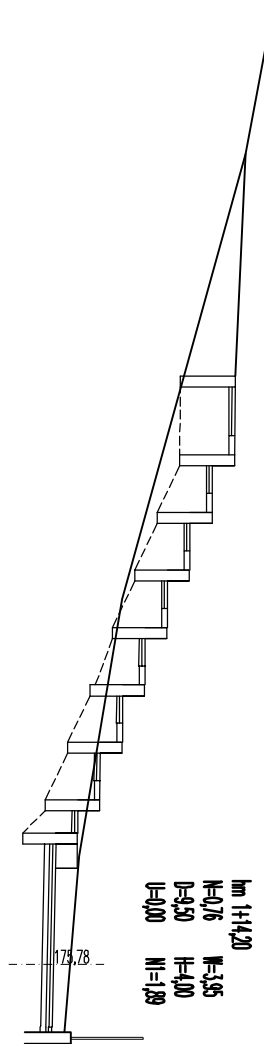
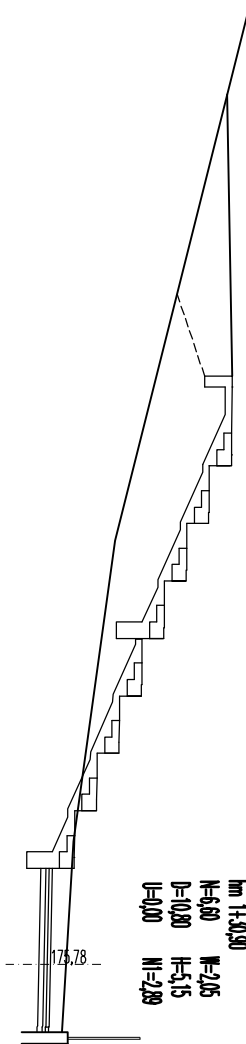
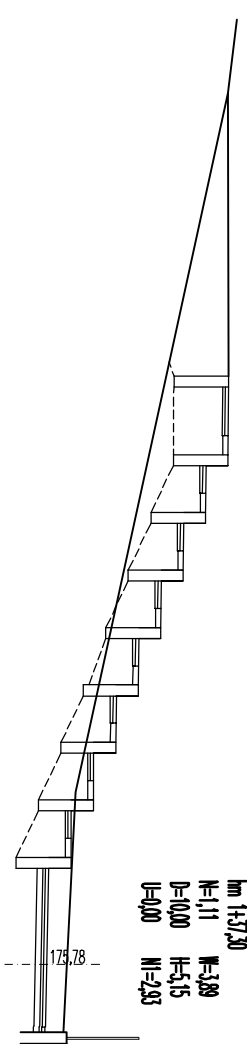
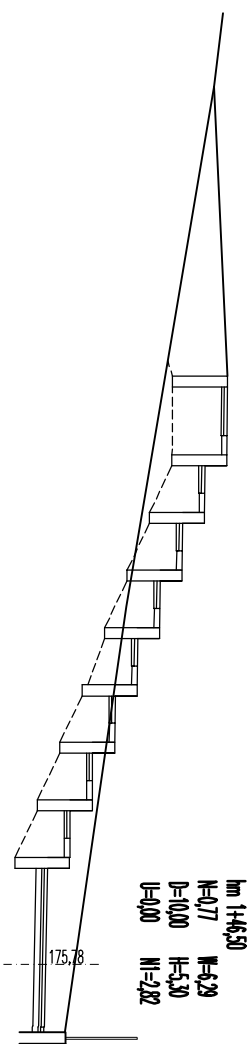
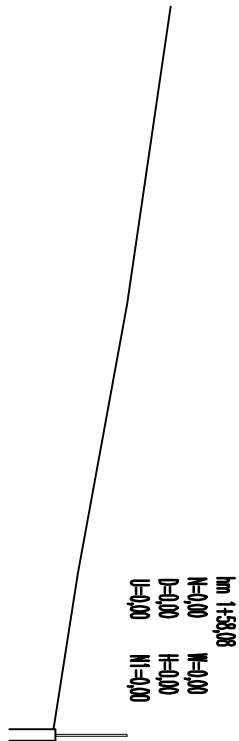


PRZESZCZEGE POPRZESZCZEGE
skala 1:100



Lokalizacja:			
OLSZTYNEK UL. 22 UPCA DZ.NR 6 I 27/5 OBR. 5			
Nazwa obiektu:			
Rozbudowa trybun Stadionu Miejskiego			
Rysunek:			
Chodnik odcinek 1-2 – przekroje			
Projektował:			
techn. Włodzimierz Łogowski			
Sprawdził:			
inż. Andrzej Osowski			
Data:			
kwiecień 2008			
Skala:			
1:100			
Rysunek nr:			
8			
Stadium:			
P.W.			